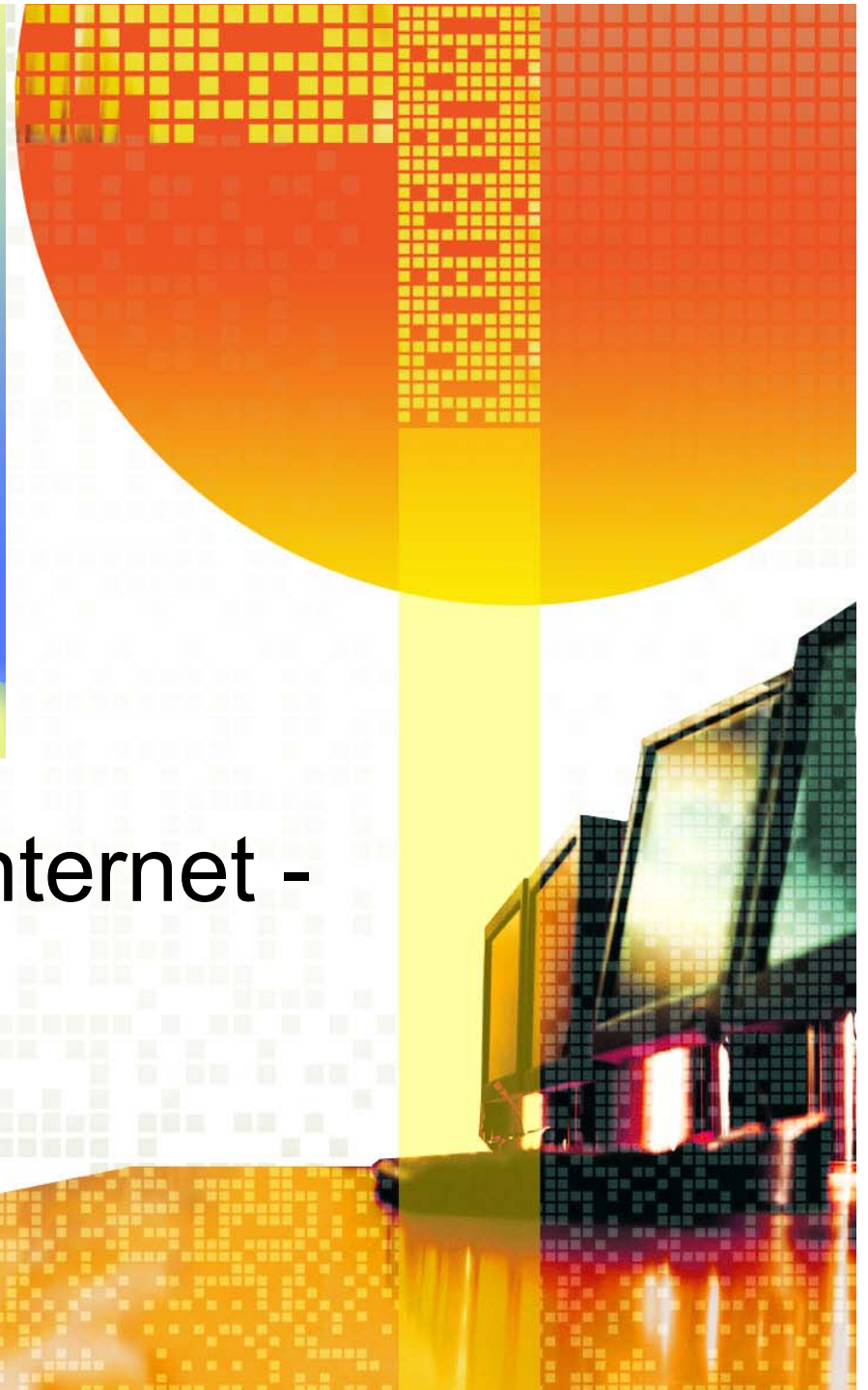




# “Speeding” along the Internet - Revisited

Palm Creek Computer Club  
March 2015



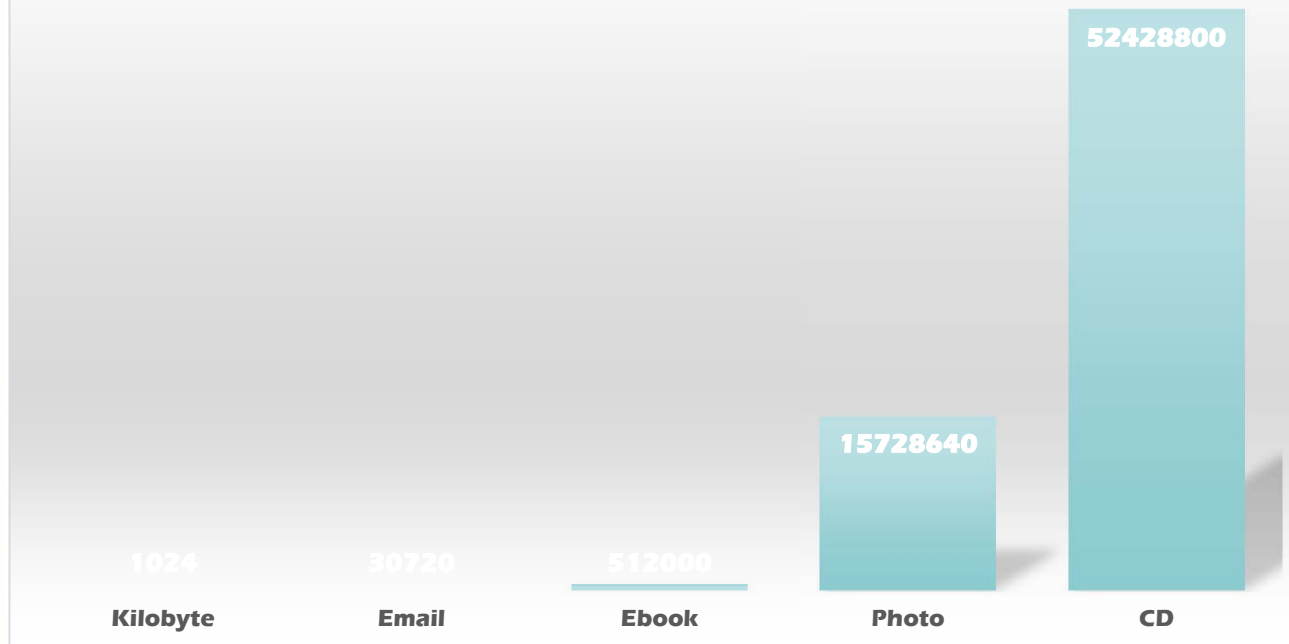
# • Size Matters!!!!

- Email: 15 - 30 KB
  - The unit kilobyte is commonly used to mean either 1000 or 1024 bytes. A byte is a single keystroke
- EBook: 300 – 500 KB
- Song – MP3: 3 – 5 MegaBytes
- Photo: 10 – 15 MegaBytes
  - 1 MB = 1048576 bytes ( $= 1024^2$ )
- CD Music: 30 – 50 MB
- Movie: 1 – 4 Gigabytes
  - 1 GiB = 1073741824 bytes ( $= 1024^3$ )



- Let's Compare

## Let's Compare





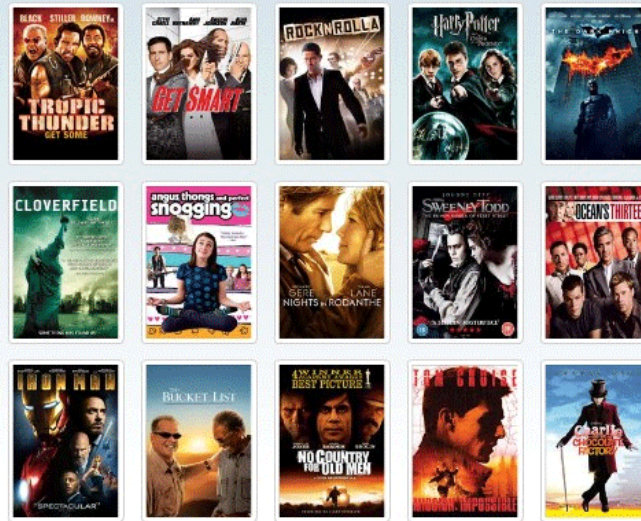
- Let's Compare Again!

### Let's Compare Again!



# • **The Internet so slow!!!!**

- You
  - Computer
  - Network Adapter
  - Router
  - Modem
- Palm Creek
  - “thru-put” capacity
- Internet
  - Local “thru-put” capacity
- My Movie
  - Modem
  - Router
  - Network Adapter
  - Server





# • Speed Testing

## AT&T Internet Speed Test

### Want More Speed?

#### Upgrade your service

Get more from the Internet and increase your speed.

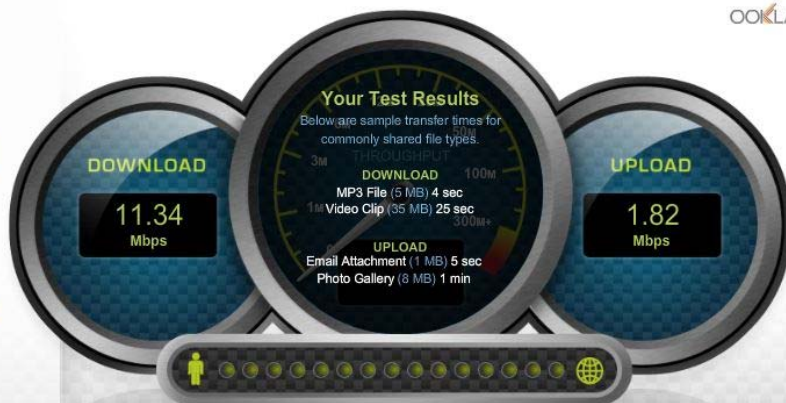
[Check Upgrade Availability](#)

#### Optimize your connection

Learn how to make the most of your current Internet connection.

[Optimize Your Connection](#)

[Re-run this test](#)



AT&T's Speed Test measures the speed between your computer and the Internet. It does not measure the speed between the Network Interface Device at your location and the AT&T network. Unsatisfactory test results do not necessarily indicate a problem with your AT&T service as factors outside of AT&T's control, such as the performance of your computer, affect your speed. Review our online self-help to learn more about these factors and what you can do to improve performance.

## AT&T Internet Speed Test

### Want More Speed?

#### Upgrade your service

Get more from the Internet and increase your speed.

[Check Upgrade Availability](#)

#### Optimize your connection

Learn how to make the most of your current Internet connection.

[Optimize Your Connection](#)

[Re-run this test](#)



AT&T's Speed Test measures the speed between your computer and the Internet. It does not measure the speed between the Network Interface Device at your location and the AT&T network. Unsatisfactory test results do not necessarily indicate a problem with your AT&T service as factors outside of AT&T's control, such as the performance of your computer, affect your speed. Review our online self-help to learn more about these factors and what you can do to improve performance.

# • Speed Testing (cont'd)

## AT&T Internet Speed Test

### Want More Speed?

#### Upgrade your service

Get more from the Internet and increase your speed.

[Check Upgrade Availability](#) ▶

#### Optimize your connection

Learn how to make the most of your current Internet connection.

[Optimize Your Connection](#) ▶

[▶ Re-run this test](#)



AT&T's Speed Test measures the speed between your computer and the Internet. It does not measure the speed between the Network Interface Device at your location and the AT&T network. Unsatisfactory test results do not necessarily indicate a problem with your AT&T service as factors outside of AT&T's control, such as the performance of your computer, affect your speed. Review our online self-help to learn more about these factors and what you can do to improve performance.

## AT&T Internet Speed Test

### Want More Speed?

#### Upgrade your service

Get more from the Internet and increase your speed.

[Check Upgrade Availability](#) ▶

#### Optimize your connection

Learn how to make the most of your current Internet connection.

[Optimize Your Connection](#) ▶

[▶ Re-run this test](#)



AT&T's Speed Test measures the speed between your computer and the Internet. It does not measure the speed between the Network Interface Device at your location and the AT&T network. Unsatisfactory test results do not necessarily indicate a problem with your AT&T service as factors outside of AT&T's control, such as the performance of your computer, affect your speed. Review our online self-help to learn more about these factors and what you can do to improve performance.



# • Speed Testing (cont'd)

## AT&T Internet Speed Test

### Want More Speed?

#### Upgrade your service

Get more from the Internet and increase your speed.

[Check Upgrade Availability](#)

#### Optimize your connection

Learn how to make the most of your current Internet connection.

[Optimize Your Connection](#)

[▶ Re-run this test](#)



AT&T's Speed Test measures the speed between your computer and the Internet. It does not measure the speed between the Network Interface Device at your location and the AT&T network. Unsatisfactory test results do not necessarily indicate a problem with your AT&T service as factors outside of AT&T's control, such as the performance of your computer, affect your speed. Review our online self-help to learn more about these factors and what you can do to improve performance.

